

Wild Life Style




MOUNT KENYA WILDLIFE ESTATE
at Ol Pejeta



A home like no other

Ol Pejeta has created a one of a kind residential estate next to the 90,000-acres Ol Pejeta Conservancy that sits between the foothills of the Aberdares, and iconic Mount Kenya. The first of the 100 unique houses are now complete making the dream of living on a world famous wildlife conservancy in a secure environment within reach.

Creating funds to support the Ol Pejeta Conservancy was the starting point for the development and the proceeds of the development and a percentage of the annual service charge will go to support the ongoing work of the Ol Pejeta Conservancy – a not for profit organization.

Nanyuki, less than 20 minutes drive away, is a vibrant and well-served town with its own airport. While only a 2 ½ hour drive from Nairobi, the frequent air links from Nanyuki mean Nairobi is an hour's flying time away.





Unique = bird and wildlife all around

"We have been looking for years for our ideal holiday home in the bush, secure yet connected to nature, and were almost giving up hope. The Mount Kenya Wildlife Estate is truly unique and ticked all our boxes. We knew immediately it was the right place for us". - G.E. , Nairobi -





The Ol Pejeta Conservancy at your doorstep

"I've always wanted to get more involved with wildlife conservation, beyond just admiring the spectacle of game. Owning a house at Mount Kenya Wildlife Estate gives me this opportunity, and Ol Pejeta Conservancy have already got me involved in some interesting projects - I can't wait to move in and spend more time enjoying our new house at Mount Kenya Wildlife Estate and working on helping out at the Ol Pejeta Conservancy". -IAI, Nbi -





Great for the family

"We will use our house at Mount Kenya Wildlife Estate for family holidays, and with 5 bedrooms our kids can invite their friends which they are very excited about. That we can explore the 1,000 acres in safety, on foot or on bikes, is truly unique and was key to our decision to buy. We are planning to let the house to paying guests when we are not using it. With Ol Pejeta Conservancy on our doorstep we are sure it will be popular". -FL,Nairobi-





House in the bush made easy

"Buying a ranch of my own is an unaffordable and impractical dream, but Mount Kenya Wildlife Estate gives me the lifestyle I want at a price I can afford. I also like the fact that I will have no management worries, and can just lock up and go".
-SML,UK-



Photography by Natalie Solskand

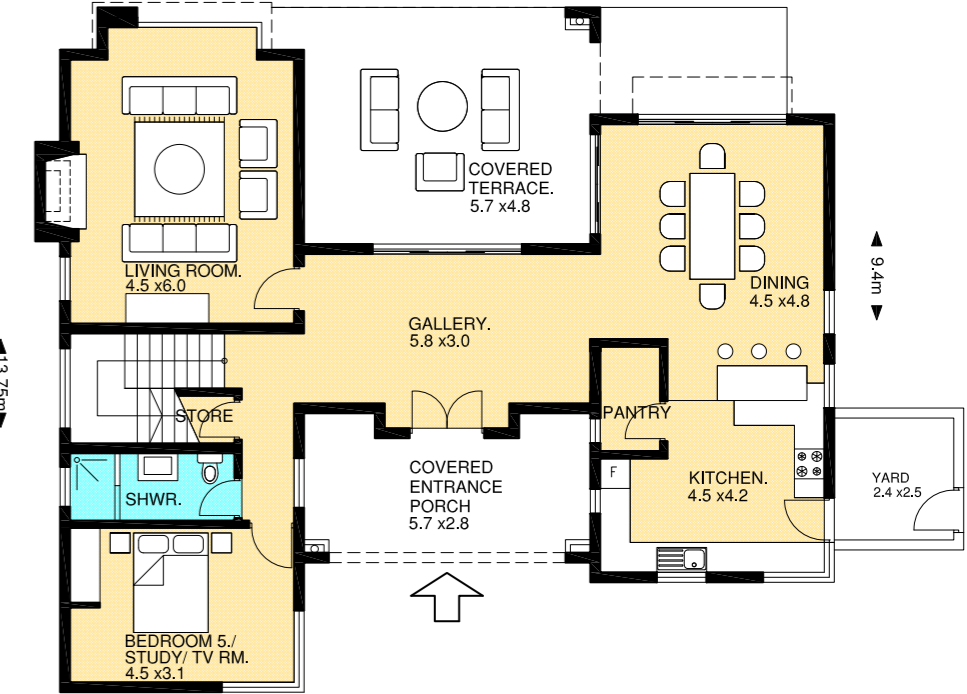
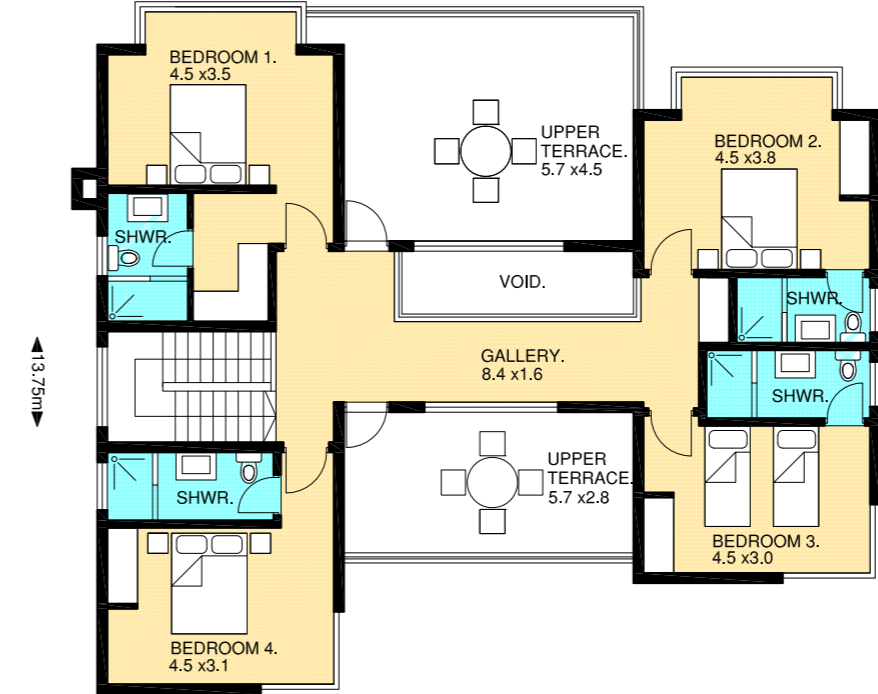


Photography by Juan Pablo Moreiras





5 Bedroom Villa

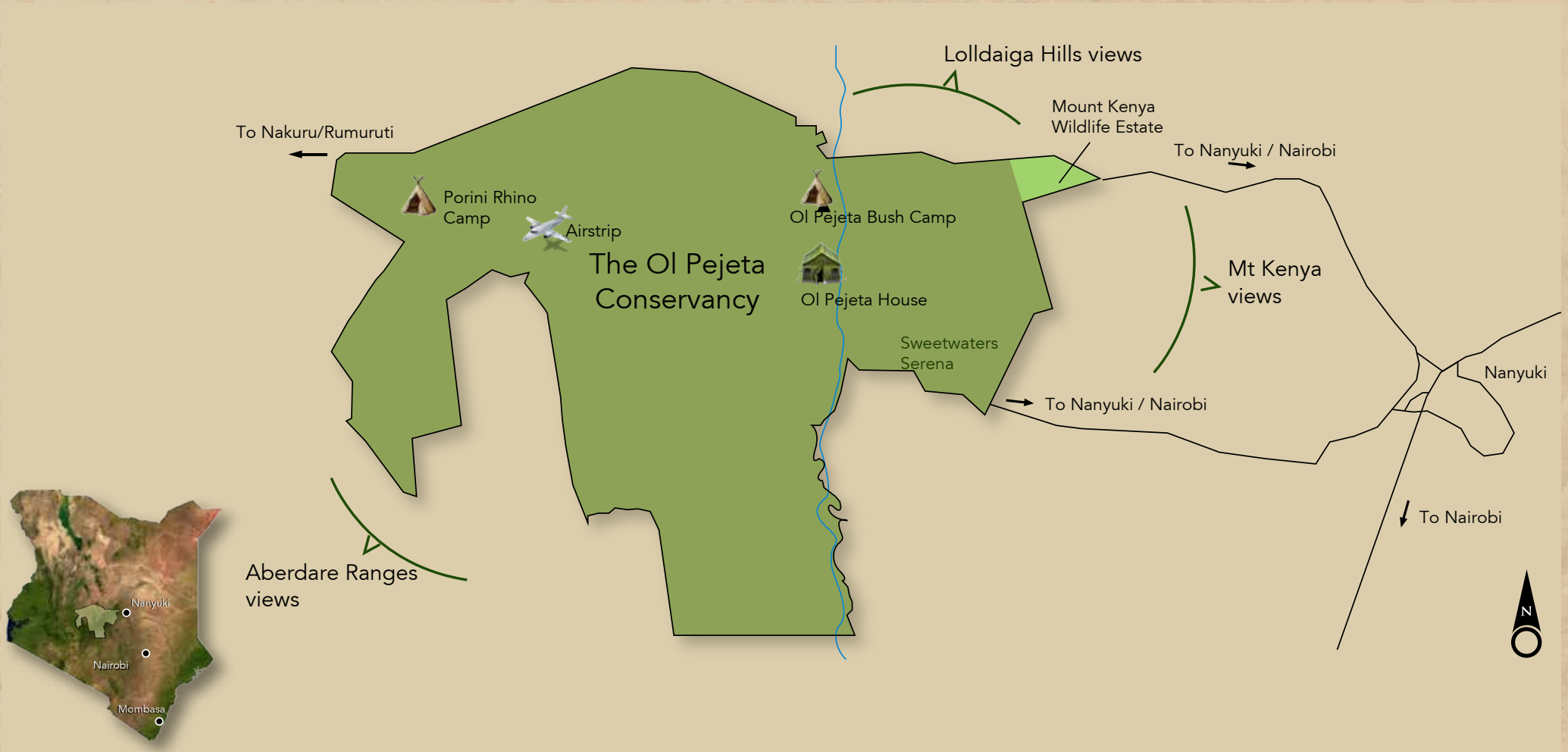




Artist impression of the Club House



MOUNT KENYA WILDLIFE ESTATE
at Ol Pejeta



Photography by Des Bowden

Show house by Palcina Interiors

www.mountkenyawe.com

Ryden International
The Green House, Ngong Road, Nairobi

Email: ian@ryden.co.ke

www.ryden.co.ke

Tel: (020) 3875121/2

Mobile: 0724 257029, 0734 832461